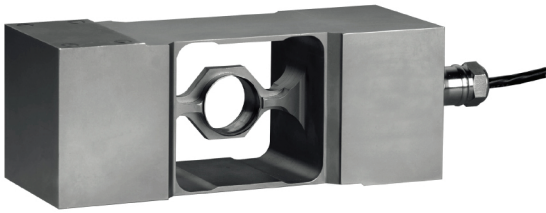


제품 소개



- PCB 는 완전 밀폐 구조의 고용량 Stainless Steel 로드셀입니다.
- 싱글 타입으로 50kg ~ 1000kg 의 다양한 모델은 고정밀 성능을 제공 합니다.
- 완벽한 스테인레스 강주조로 식품 및 화학 공정 분야 환경에서 최적화된 제품입니다.
- 방수용 벤치저울 / 방수용 플랫폼 저울 / 화학 및 제약 식품 저울 등

특징 Feature

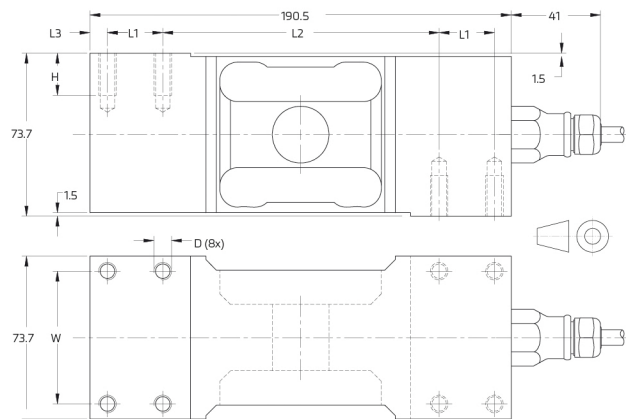
- Stainless Steel 구조
- EN 60 529에 따른 보호 : IP68(up to 2m 물 깊이) / 69K
- 밀폐된 구조 / 높은 정밀도
- 플랫폼 규격 : 1000 x 1000mm
- 로드셀 케이블 : 폴리 우레탄 3m x 5mm

specifications

Maximum capacity (E _{max})	kg	50 / 100 / 250 / 500 / 1,000		
Accuracy class according to OIML R60		(GP)	C3	C3 M1 6
Maximum number of verification intervals (n _{LC})		n.a.	3,000	
Minimum load cell verification interval (v _{min})		n.a.	E _{max} /12,500	
Temperature effect on minimum dead load output (TC ₀)	%*RO/10°C	± 0.0400	± 0.0112	
Temperature effect on sensitivity (TC _{RO})	%*RO/10°C	± 0.0200	± 0.0100	
Combined error	%*RO	± 0.0500	± 0.0200	± 0.0180
Non-linearity	%*RO	± 0.0400	± 0.0166	± 0.0166
Hysteresis	%*RO	± 0.0400	± 0.0166	± 0.0083
Creep error (30 minutes) / DR	%*RO	± 0.0600	± 0.0166	± 0.0083
Optional: Min. load cell verification interval (v _{min} opt)		n.a.	E _{max} /20,000; 250 kg or higher: E _{max} /25,000	
Optional: Temp. effect on min. dead load output (TC ₀ opt)	%*RO/10°C	n.a.	± 0.0070; 250 kg or higher: ± 0.0056	
Rated Output (RO)	mV/V	2 ± 5%		
Zero balance	%*RO	± 5		
Excitation voltage	V	5...15		
Input resistance (R _{LC})	Ω	1100 ± 50		
Output resistance (R _{out})	Ω	960 ± 50		
Insulation resistance (100 V DC)	MΩ	≥ 5000		
Safe load limit (E _{lim})	%*E _{max}	200		
Ultimate load	%*E _{max}	300		
Safe side load	%*E _{max}	100		
Maximum platform size; loading acc. to OIML R76	mm	600 x 600 for 50 kg / 800 x 800 for 100 kg / 1,000 x 1,000 for 250...1,000 kg		
Maximum off centre distance at maximum capacity	mm	200 for 50 kg / 250 for 100...500 kg / 300 for 1,000 kg		
Compensated temperature range	°C	-10...+40		
Operating temperature range	°C	-40...+80 (ATEX -40...+60)		
Load cell material		stainless steel 17-4 PH (1.4548)		
Sealing		complete hermetic sealing; cable entry sealed by glass to metal header		
Protection according EN 60 529		IP68 (up to 2m water depth) / IP69K		
Packet weight	kg	5.4 (50-100kg), 5.7 (250-500kg), 5.8 (1,000kg)		

The limits for Non-Linearity, Hysteresis, and TC_{RO} are typical values.
The sum of Non-linearity, Hysteresis and TC_{RO} meets the requirements according to OIML R60 with p_{LC}=0.7.

product dimensions (mm)



Type	L1	L2	L3	H	W	D	Mounting bolts	Torque 1)
PCB-50/100/250/500/1,000 kg	25	125	8	19	60	M8 2)	M8 8.8 / PCB-1,000 kg: M8 12.9	25 Nm
PCBB-500/1,000 kg	35	104.5	8	25	57	M12	M12 8.8	90 Nm
PCBC-50/100/250/500/1,000 kg	35	107	6.75	19	50	M8 2) 3)	M8 8.8	25 Nm

1) Torque values assume oiled thread. 2) Unified thread 5/16-18 is available. 3) OIML approval only valid for M8 threads.

wiring

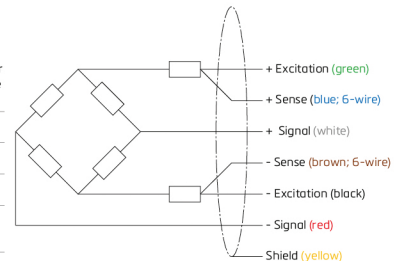
The load cell is provided with a shielded, 6 conductor cable (AWG 26) or with a shielded, 4 conductor cable (AWG 24).

Cable jacket: polyurethane.

Cable length: 3 m

Cable diameter: 5 mm

The shield is floating or connected to the load cell body



RoHS compliant

