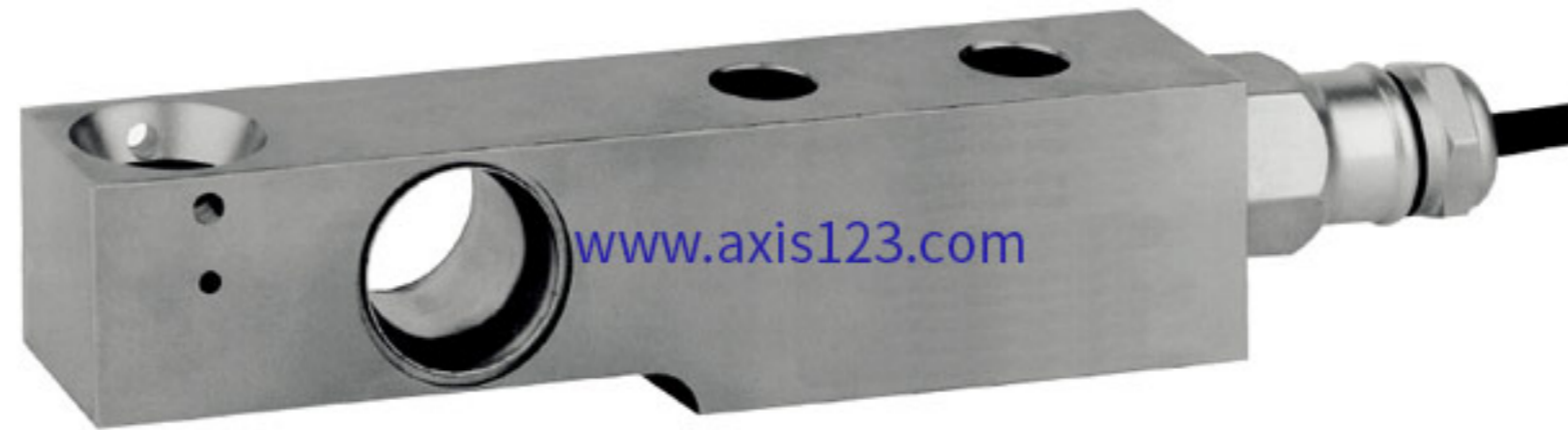
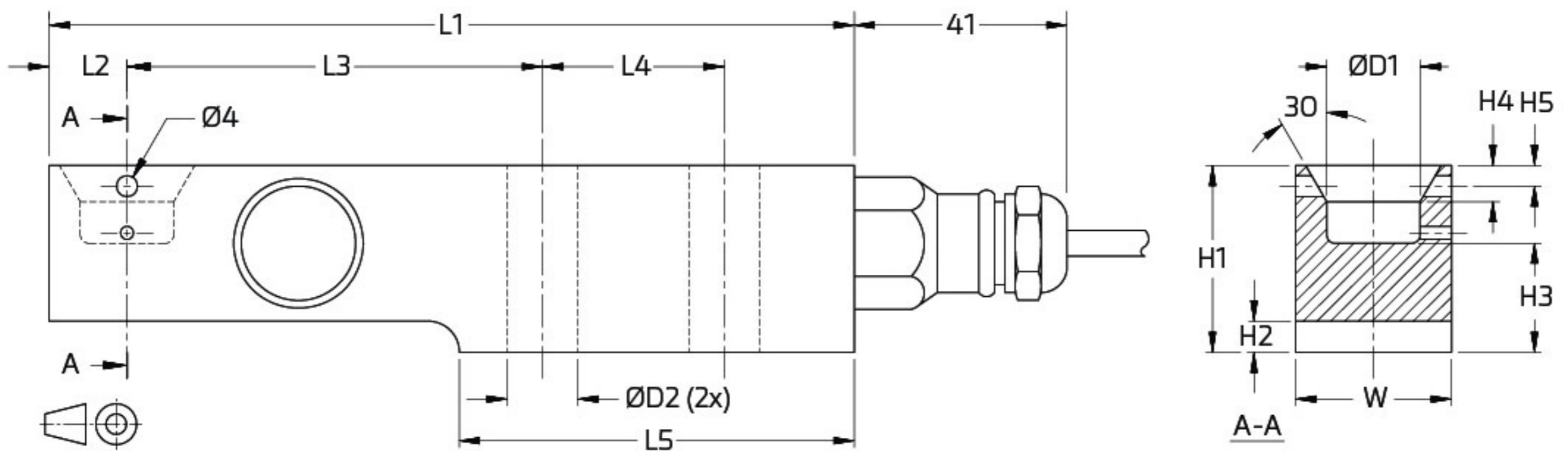


**MODEL : SB4-EXP**



RoHS compliant



Type	L1	L2	L3	L4	L5	H1	H2	H3	H4	H5	W	D1	D2	Mount bolts	Torque*
SB4-5/10/20 kN	155	15	80	35	76	36	6	21	7	4	30	18	13	M12 8.8	90 Nm
SB4-50 kN	190	21	105	40	93	49	8	28.5	6	8	43	25	21	M20 8.8	400 Nm
SB4-100 kN	245	30	135	50	120	73	12.5	42	10	n.a.	60	30	27	M24 8.8	700 Nm

Torque\* - values assume oiled threads.



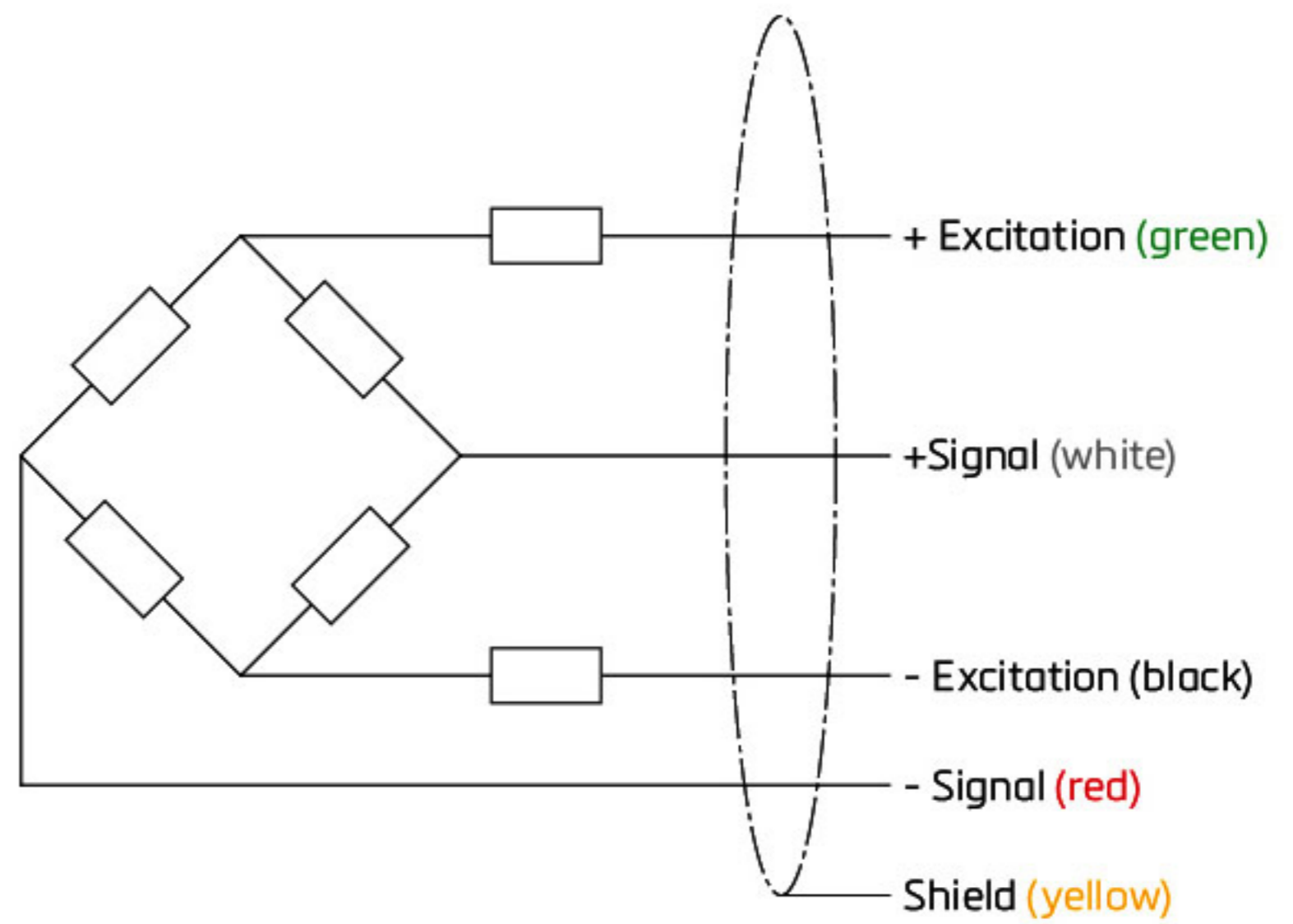
The load cell is provided with a shielded, 4 conductor cable (AWG 24).

Cable jacket polyurethane

Cable length: 3 m for SB4-5 kN/10 kN/20 kN  
4.5 m for SB4-50 kN/100 kN

Cable diameter: 5 mm

Shield is floating or connected to the load cell body



- ▶ SB4는 510kg~5099kg 까지 사용 할 수 있는 고정밀 로우프로파일 벤딩 빔 로드셀
- ▶ Stainless Steel 구조와 완벽한 밀폐 밀봉은 열악한 산업 분야에서 신뢰성과 정확성을 보장
- ▶ 셀프-얼라인먼트 피트와 결합될때 블라인드 홀로드 부하 도입 장치로 인해 고정밀 계량 플랫폼 제작에 적합한 로드셀

Maximum capacity ( $E_{max}$ )	kN	5 / 10 / 20 / 50 / 100				5 / 10 / 20 / 50	
Metric equivalents (1lb=0.45359kg)	kg	510 / 1,020 / 2,039 / 5,099 / 10,197				510 / 1,020 / 2,039 / 5,099	
Accuracy class according to OIML R60	-	(GP)	C1	C3	C3 MI 7.5	C4	C4 MI 7.5
Max number of verification intervals ( $n_{max}$ )	-	n.a.	1,000	3,000		4,000	
Minimum load cell verification interval ( $V_{min}$ )	-	n.a.	$E_{max} / 5,000$	$E_{max} / 11,000$			
Temperature effect on minimum dead load output ( $TC_0$ )	%*RO/°10C	± 0.0400	± 0.0275	± 0.0127			
Temperature effect on sensitivity ( $TC_{RO}$ )	%*RO/°10C	± 0.0200	± 0.0160	± 0.0100		± 0.0080	
Combined error	%*RO	± 0.0500	± 0.0300	± 0.0200	± 0.0180	± 0.0180	± 0.0150
Non-linearity	%*RO	± 0.0400	± 0.0300	± 0.0166	± 0.0166	± 0.0125	± 0.0125



Hysteresis	%*RO	± 0.0400	± 0.0300	± 0.0166	± 0.0066	± 0.0125	± 0.0066
Creep error (30 minutes) / DR	%*RO	± 0.0600	± 0.0490	± 0.0166	± 0.0066	± 0.0125	± 0.0066
Rated Output (RO)	mV/V	2 ± 0.1%					
Calibration in mV/V/ (A...I classified)	%	± 0.05 (± 0.005)					
Excitation voltage	V	5...15					
Zero balance	%*RO	± 5					
Input resistance (R <sub>LC</sub> )	Ω	1,100 ± 50					
Output resistance (R <sub>out</sub> )	Ω	1,000 ± 2					
Insulation resistance (100 V DC)	MΩ	≥ 5,000					
Safe load limit (E <sub>lim</sub> )	%*E <sub>max</sub>	200					
Ultimate load	%*E <sub>max</sub>	300					
Safe side load	%*E <sub>max</sub>	100					
Compensated temperature range	°C	-10...+40					
Operating temperature range	°C	-40...+80 (ATEX -40...+60)					
Load cell material	-	stainless steel 17-4 PH (1.4548)					
Sealing	-	complete hermetic sealing; cable entry sealed by glass to metal header					
Protection according EN 60 529	-	IP68 (up to 2 m water depth) / IP69K					
Packet weight	kg	1.4 (5-20kN), 2.9 (50kN), 7.1 (100kN)					

The limits for Non-Linearity, Hysteresis, and TC<sub>RO</sub> are typical values.

The sum of Non-linearity, Hysteresis and TC<sub>RO</sub> meets the requirements according to OIML R60 with p<sub>LC</sub>=0.7.

- Stainless Steel 구조 / 밀폐 봉인 구조
- 다양한 용량 / 높은 정밀도
- EN 60 529에 따른 보호 : IP 68(up to 2m 물 깊이) / 69k
- 로드셀 케이블 : 폴리 우레탄 3 / 4.5m X 5mm