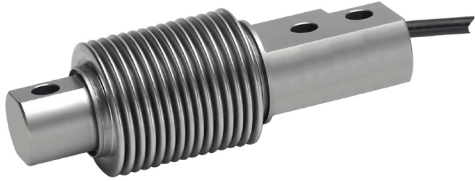


제품 소개

- SB8 벤딩 빔은 10kg~500kg 까지 다양한 범위에서 사용할수 있어 다양한 적용이 가능합니다.
- Stainless Steel 구조의 컴팩트한 사이즈는 완전 밀봉으로 멀티 헤드 중량 측정 장비와 저용량 선박 시스템 및 호퍼 중량 측정 시스템에 적합한 로드셀 입니다.



특징 Feature

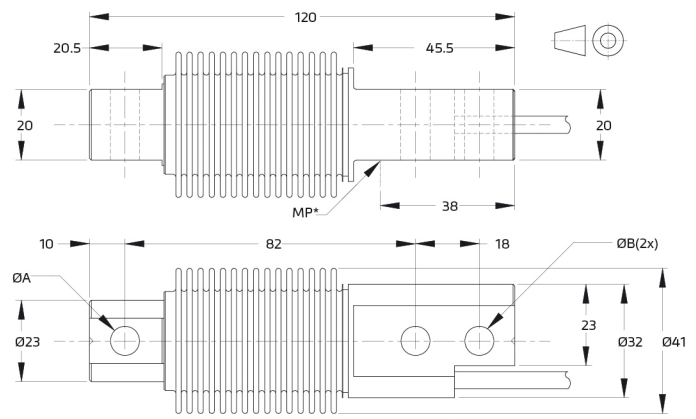
- Stainless Steel 구조 / 밀폐 봉인 구조
- EN 60 529에 따른 보호 : IP68(up to 2m 물 깊이)
- 다양한 용량 / 높은 정밀도
- 로드셀 케이블 : 폴리 우레탄 3m × 5.8mm

specifications

Maximum capacity (E _{max})	kg	10 / 20 / 50 / 100 / 200 / 250 / 500
Accuracy class according to OIML R60		(GP) C3
Maximum number of verification intervals (n _{max})		n.a. 3,000
Minimum load cell verification interval (V _{min})		n.a. E _{max} / 10,000
Temperature effect on minimum dead load output (TC ₀)	%*RO/10°C	± 0.0400 ± 0.0140
Temperature effect on sensitivity (TC ₉₀)	%*RO/10°C	± 0.0200 ± 0.0100
Combined error	%*RO	± 0.0500 ± 0.0200
Non-linearity	%*RO	± 0.0400 ± 0.0166
Hysteresis	%*RO	± 0.0400 ± 0.0166
Creep error (30 minutes) / DR	%*RO	± 0.0600 ± 0.0166
Rated Output (RO)	mV/V	2 ± 0.1%
Calibration in mV/V/Ω (A...J classified)	%	± 0.05 (± 0.005)
Zero balance	%*RO	± 5
Excitation voltage	V	5...15
Input resistance (R _{ic})	Ω	380 ± 10
Output resistance (R _{out})	Ω	350 ± 3
Insulation resistance (100 V DC)	MΩ	≥ 5,000
Safe load limit (E _{lim})	%*E _{max}	200
Ultimate load	%*E _{max}	300
Safe side load	%*E _{max}	100
Compensated temperature range	°C	-10...+40
Operating temperature range	°C	-40...+80 (ATEX -40...+60)
Load cell material		stainless steel 17-4 PH (1.4548)
Protection according EN 60 529		IP68 (up to 2 m water depth)
Packet weight	kg	0.62 (10-20kg), 0.64 (50-250kg), 0.8 (500kg)

The limits for Non-Linearity, Hysteresis, and TC₉₀ are typical values.
The sum of Non-linearity, Hysteresis and TC₉₀ meets the requirements according to OIML R60 with pLC=0.7.

product dimensions (mm)



Type	A	B	Mounting bolts	Torque*
10...250 kg	8.2	8.2	M8 8.8	25 Nm
500 kg	10.5	8.2	M8 10.9	35 Nm

Torque* - values assume oiled threads.
MP* - Edge of mounting plage

wiring

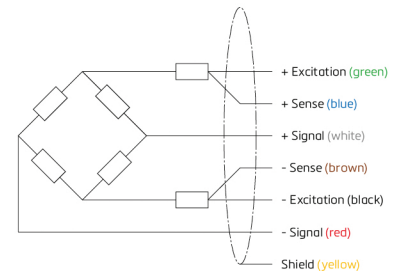
The load cell is provided with a shielded, 6 conductor cable (AWG 26).

Cable jacket polyurethane

Cable length: 3 m

Cable diameter: 5.8 mm

The shield is connected to the load cell body



RoHS
compliant

