



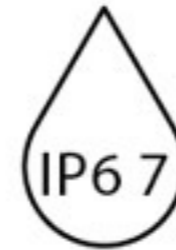
Since 1994, DIGITAL LEADER Axis Sensitive Co. Ltd
Industrial Explosion Proof Load Cell



MODEL : PC6-EXP



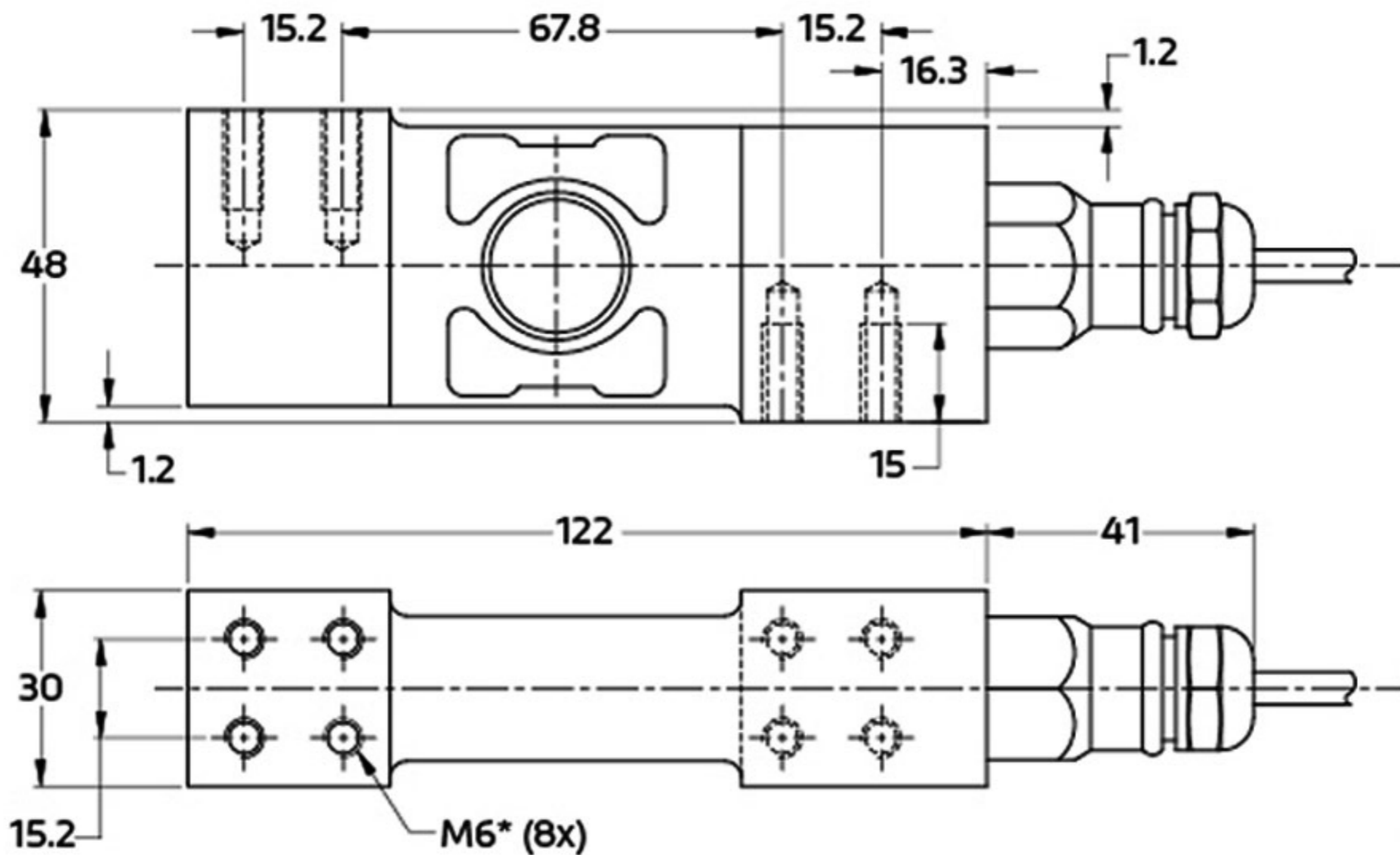
RoHS
compliant



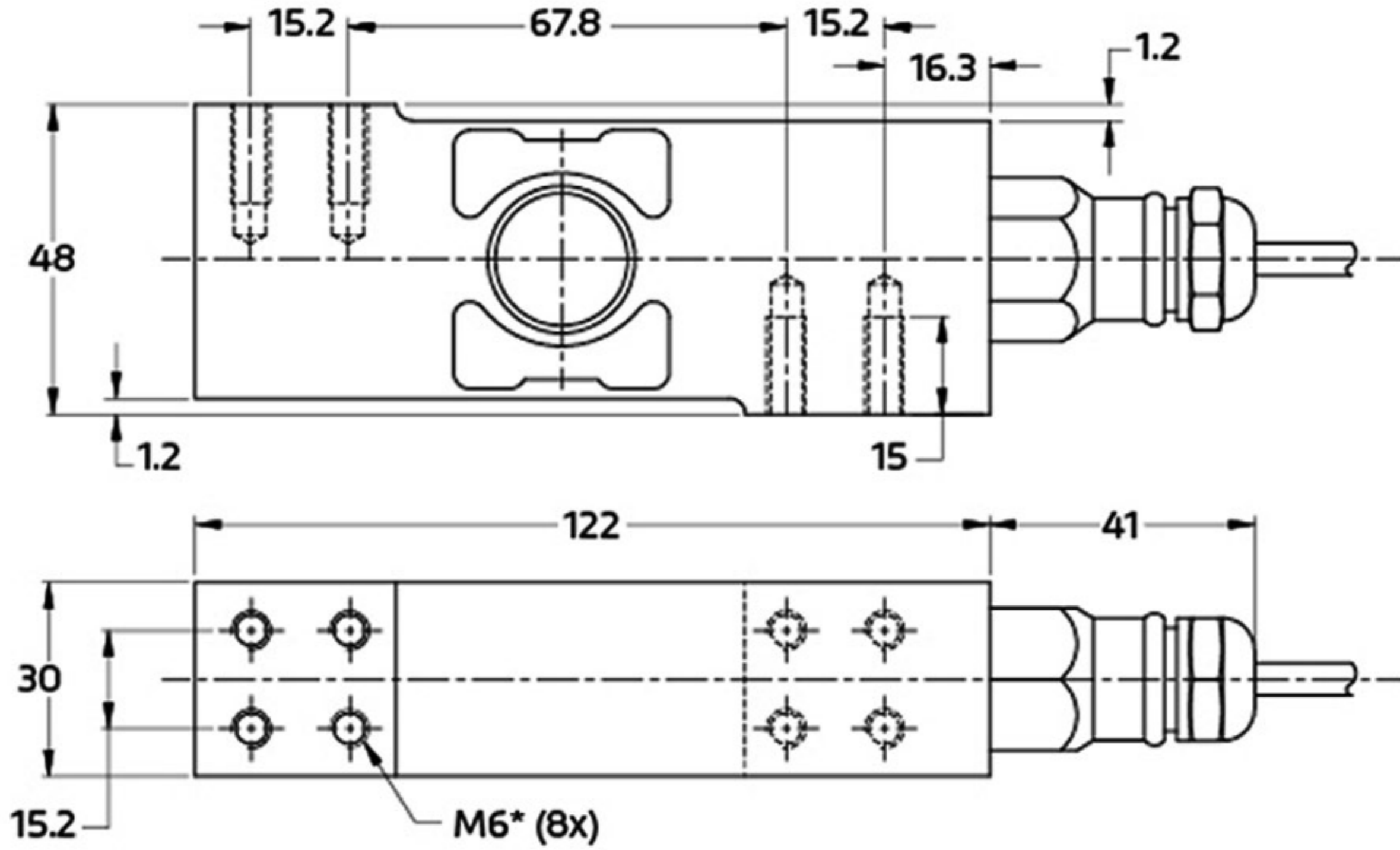
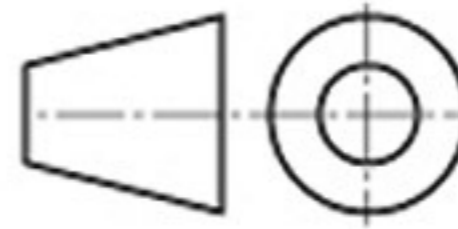
제품 규격 [UNIT : mm]

Product Specification

10kg, 100kg and 200kg



20kg and 50kg



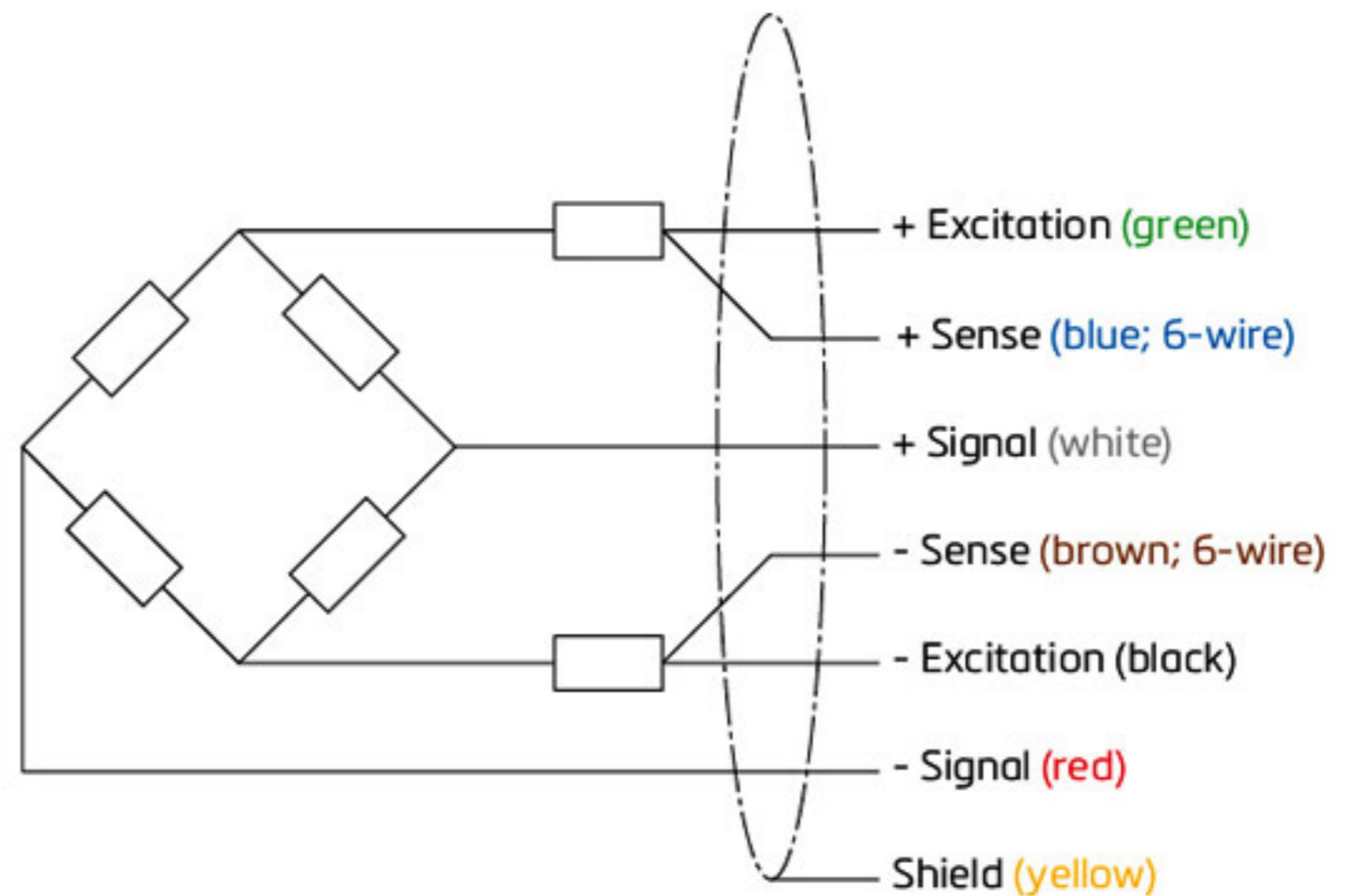
The load cell is provided with a shielded, 6 conductor cable (AWG 26) or with a shielded, 4 conductor cable (AWG 24).

Cable jacket: polyurethane.

Cable length: 3 m

Cable diameter: 5 mm

The shield is floating or connected to the load cell body



제품 사양

Specification

- ▶ 밀봉 매립방식으로 환경적으로 매우 높은 내구성을 제공
- ▶ 10kg~200kg 까지의 용량과 OIML 4000d
- ▶ 정밀하고 견고하여 식품 및 음료 분야의 계량기에 적합 / 고정밀 벤치 스케일
- ▶ 벤치형 저울 / 소형 플랫폼 / 고속 중량 선별기 등

Maximum capacity (E_{max})	kg	10 / 20 / 50 / 100 / 200			
Accuracy class according to OIML R60		(GP)	C3	C3 MI 6	C4
Maximum number of verification intervals (n_{LC})		n.a.	3,000		4,000
Minimum load cell verification interval (v_{min})		n.a.	$E_{max} / 12,500$		
Temperature effect on minimum dead load output (TC_0)	%*RO/10°C	± 0.0400	± 0.0112		
Temperature effect on sensitivity (TC_{RO})	%*RO/10°C	± 0.0200	± 0.0100		± 0.0080
Combined error	%*RO	± 0.0500	± 0.0200	± 0.0180	± 0.0180
Non-linearity	%*RO	± 0.0400	± 0.0166	± 0.0166	± 0.0125
Hysteresis	%*RO	± 0.0400	± 0.0166	± 0.0083	± 0.0125
Creep error (30 minutes) / DR	%*RO	± 0.0600	± 0.0166	± 0.0083	± 0.0125
Optional: Min. load cell verification interval ($v_{min opt}$)		n.a.	$E_{max} / 25,000$		
Optional: Temp. effect on min. dead load output ($TC_0 opt$)	%*RO/10°C	n.a.	± 0.0056		
Rated Output (RO)	mV/V	2 ± 5%			
Zero balance	%*RO	± 5			
Excitation voltage	V	5...15			
Input resistance (R_{LC})	Ω	1,100 ± 50			
Output resistance (R_{out})	Ω	960 ± 50			
Insulation resistance (100 V DC)	MΩ	≥ 5,000			
Safe load limit (E_{lim})	%* E_{max}	200			
Ultimate load	%* E_{max}	300			
Safe side load	%* E_{max}	100			
Maximum platform size; loading acc. to OIML R76	mm	350 x 350 for 10...20 kg / 500 x 500 for 50 kg / 600 x 600 for 100...200 kg			
Maximum off centre distance at maximum capacity	mm	115 for 10...20 kg / 166 for 50 kg / 200 for 100...200 kg			
Compensated temperature range	°C	-10...+40			
Operating temperature range	°C	-40...+80 (ATEX -40...+60)			
Load cell material		stainless steel 17-4 PH (1.4548)			
Sealing		complete hermetic sealing; cable entry sealed by glass to metal header			
Protection according EN 60 529		IP68 (up to 2 m water depth) / IP69K			
Packet weight	kg	1.32			

- ▶ **Stainless Steel 구조 / 밀폐 구조**
- ▶ **다양한 용량 범위 / 높은 정밀도**
- ▶ **플랫폼 규격 600 X 600mm**
- ▶ **로드셀 케이블 : 폴리 우레탄 3m x 5mm**
- ▶ **EN 60 529에 따른 보호 : IP 68(up to 2m 물 깊이) / 69K**

모 델	용 량 (kg)	집판규격 (mm)	등 급	재 질
PC 22	5,20,30,40	350 × 350	C3	Aluminum
PC 42	5,10,20,30,50,100,200	400 × 400	C3	Aluminum
PC 46	50,100,150,200,250	400 × 400	C4	Aluminum
PC 1	7.5,10,15,30,50,75,100,200	600 × 600	C4	Stainless Steel
PC 6	10,20,50,100,200	600 × 600	C4	Stainless Steel
PC 7	100,250,500	600 × 600	C4	Stainless Steel
PC 60	30,50,100,150,200,300,500,750	600 × 600	C3	Aluminum
PC 12	20	600 × 600	C3	Stainless Steel
PC 2	20	600 × 600	G3*	Stainless Steel
	150	1000 × 1000	G3*	Stainless Steel
PCB	50/100/250/500/1000	1000 × 1000	C3M16	Stainless Steel
PC 2H	2000	1200 × 1200	C3	Stainless Steel