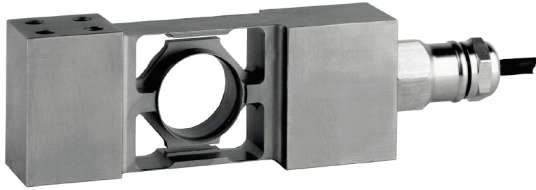


제품 소개

- PC6 은 물기 및 습기가 있는 환경에서 사용 가능한 높은 정확도의 계량을 위해 승인된 제품입니다.
- 벤치형 싱글 타입으로 10kg ~200kg 의 용량과 OIML 4000d 를 포함한 정밀하고 견고하며 식품 및 음료 분야의 계량기에 적합하며 고정밀 벤치 스케일 적합합니다.
- 벤치형 저울 / 소형 플랫폼 / 고속 중량 선별기 등

특징 Feature

- Stainless Steel 구조 / 밀폐된 구조
- EN 60 529에 따른 보호 : IP68(up to 2m 물 깊이) / 69K
- 다양한 용량 범위 / 높은 정밀도
- 플랫폼 규격 600 x 600mm
- 로드셀 케이블 : 폴리 우레탄 3m x 5mm

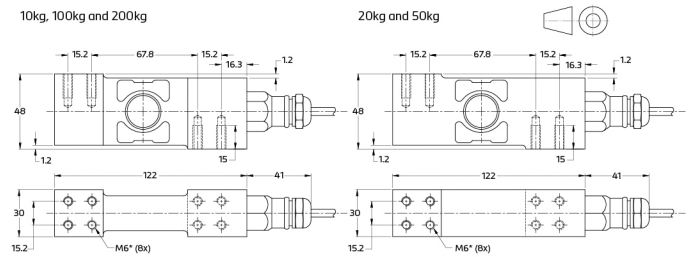


specifications

| Maximum capacity (E _{max}) | kg | 10 / 20 / 50 / 100 / 200 | | | |
|---|--------------------|---|----------|----------|----------|
| Accuracy class according to OIML R60 | (GP) | C3 | C3 MI 6 | C4 | |
| Maximum number of verification intervals (n _{LC}) | n.a. | 3,000 | | 4,000 | |
| Minimum load cell verification interval (V _{min}) | n.a. | E _{max} /12,500 | | | |
| Temperature effect on minimum dead load output (TC ₀) | %*RO/10°C | ± 0.0400 | ± 0.0112 | | |
| Temperature effect on sensitivity (TC _{RO}) | %*RO/10°C | ± 0.0200 | ± 0.0100 | ± 0.0080 | |
| Combined error | %*RO | ± 0.0500 | ± 0.0200 | ± 0.0180 | ± 0.0180 |
| Non-linearity | %*RO | ± 0.0400 | ± 0.0166 | ± 0.0166 | ± 0.0125 |
| Hysteresis | %*RO | ± 0.0400 | ± 0.0166 | ± 0.0083 | ± 0.0125 |
| Creep error (30 minutes) / DR | %*RO | ± 0.0600 | ± 0.0166 | ± 0.0083 | ± 0.0125 |
| Optional: Min. load cell verification interval (V _{min} opt) | n.a. | E _{max} /25,000 | | | |
| Optional: Temp. effect on min. dead load output (TC ₀ opt) | %*RO/10°C | n.a. | ± 0.0056 | | |
| Rated Output (RO) | mV/V | 2 ± 5% | | | |
| Zero balance | %*RO | ± 5 | | | |
| Excitation voltage | V | 5..15 | | | |
| Input resistance (R _{LC}) | Ω | 1,100 ± 50 | | | |
| Output resistance (R _{out}) | Ω | 960 ± 50 | | | |
| Insulation resistance (100 V DC) | MΩ | ≥ 5,000 | | | |
| Safe load limit (E _{lim}) | %*E _{max} | 200 | | | |
| Ultimate load | %*E _{max} | 300 | | | |
| Safe side load | %*E _{max} | 100 | | | |
| Maximum platform size; loading acc. to OIML R76 | mm | 350 x 350 for 10...20 kg / 500 x 500 for 50 kg / 600 x 600 for 100...200 kg | | | |
| Maximum off centre distance at maximum capacity | mm | 115 for 10...20 kg / 166 for 50 kg / 200 for 100...200 kg | | | |
| Compensated temperature range | °C | -10...+40 | | | |
| Operating temperature range | °C | -40...+80 (ATEX -40...+60) | | | |
| Load cell material | | stainless steel 17-4 PH (1.4548) | | | |
| Sealing | | complete hermetic sealing; cable entry sealed by glass to metal header | | | |
| Protection according EN 60 529 | | IP68 (up to 2 m water depth) / IP69K | | | |
| Packet weight | kg | 1.32 | | | |

The limits for Non-Linearity, Hysteresis, and TC_{RO} are typical values.
The sum of Non-linearity, Hysteresis and TC_{RO} meets the requirements according to OIML R60 with p_{LC}=0.7.

product dimensions (mm)



Mounting bolts M6 8.8; torque 10 Nm. Torque value assumes oiled threads.
* Unified thread 1/4-20 UNC is available.

wiring

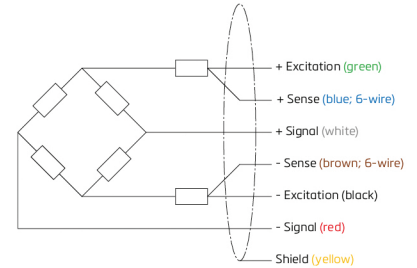
The load cell is provided with a shielded, 6 conductor cable (AWG 26) or with a shielded, 4 conductor cable (AWG 24).

Cable jacket: polyurethane.

Cable length: 3 m

Cable diameter: 5 mm

The shield is floating or connected to the load cell body



RoHS compliant

