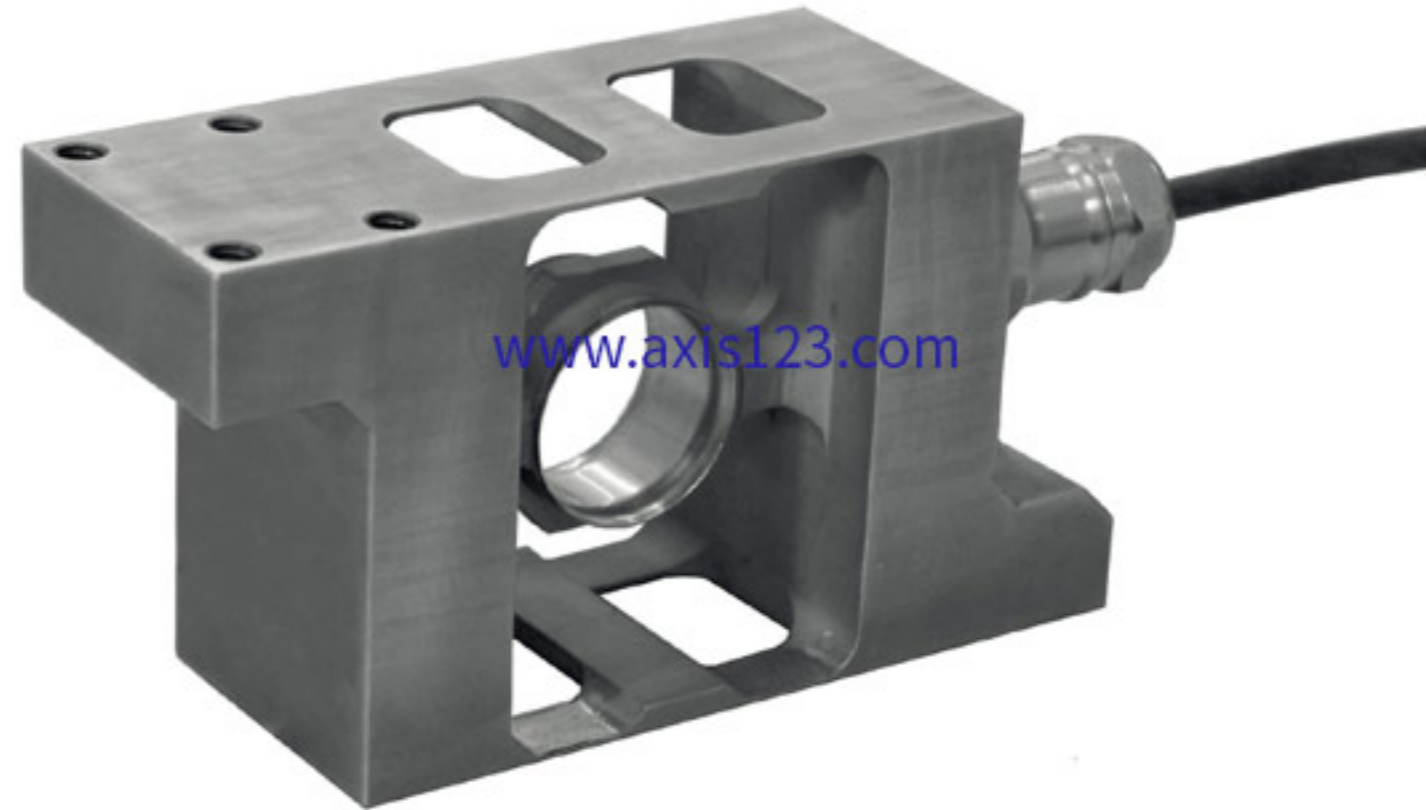




Since 1994, DIGITAL LEADER Axis Sensitive Co. Ltd
Industrial Explosion Proof Load Cell



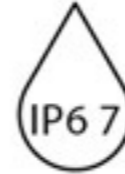
MODEL : PC12-EXP



www.axis123.com

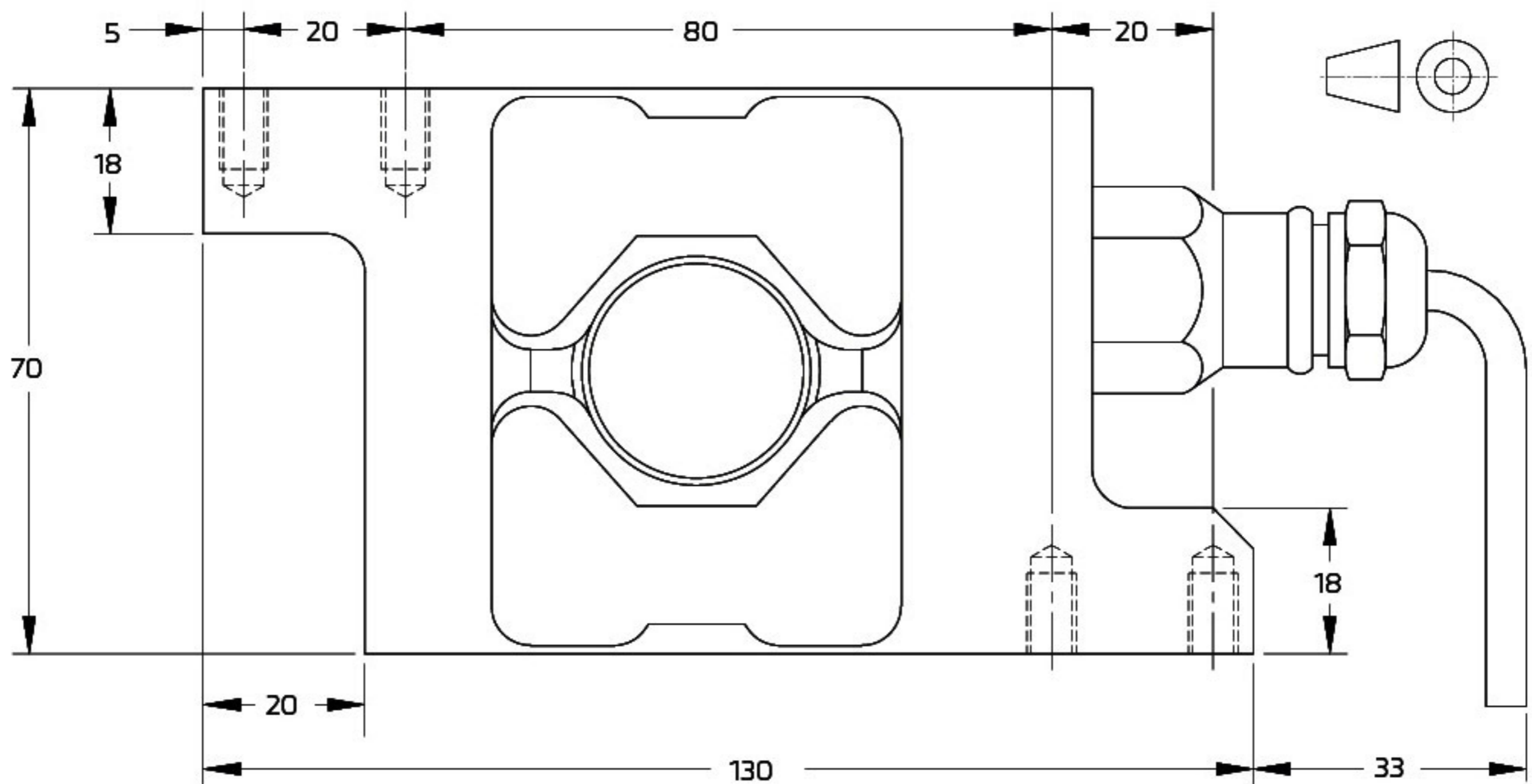


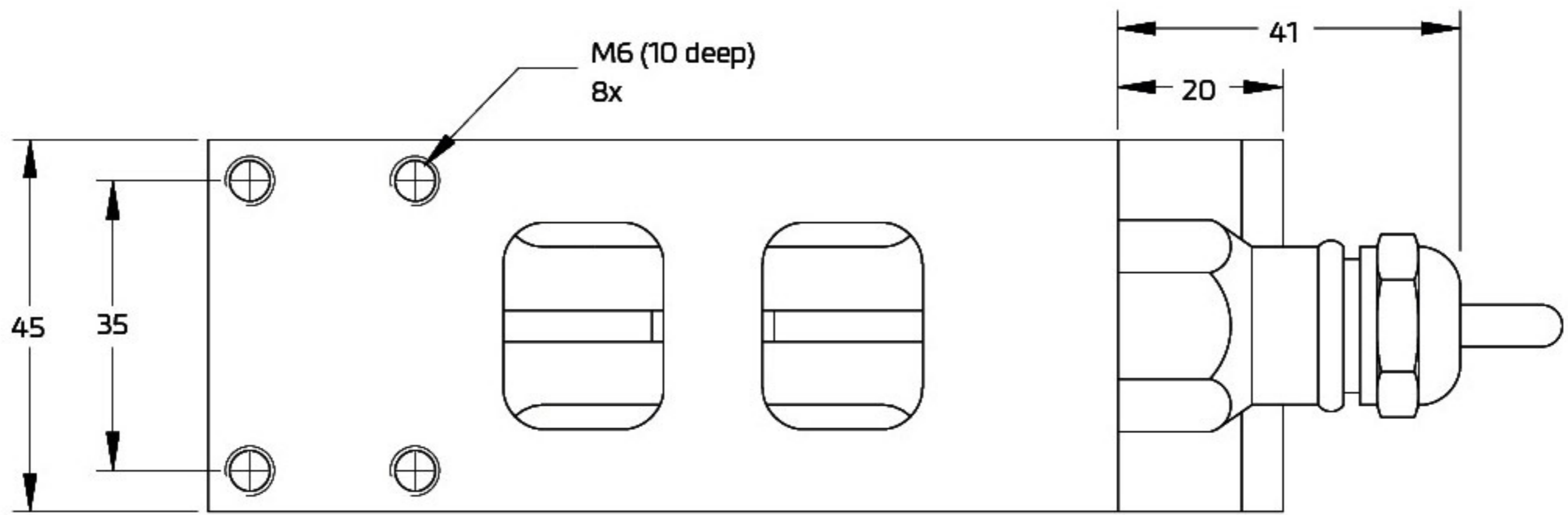
RoHS
compliant



제품 규격 [UNIT : mm]

Product Specification





wiring

The load cell is provided with a shielded, 6 conductor cable (AWG 26).

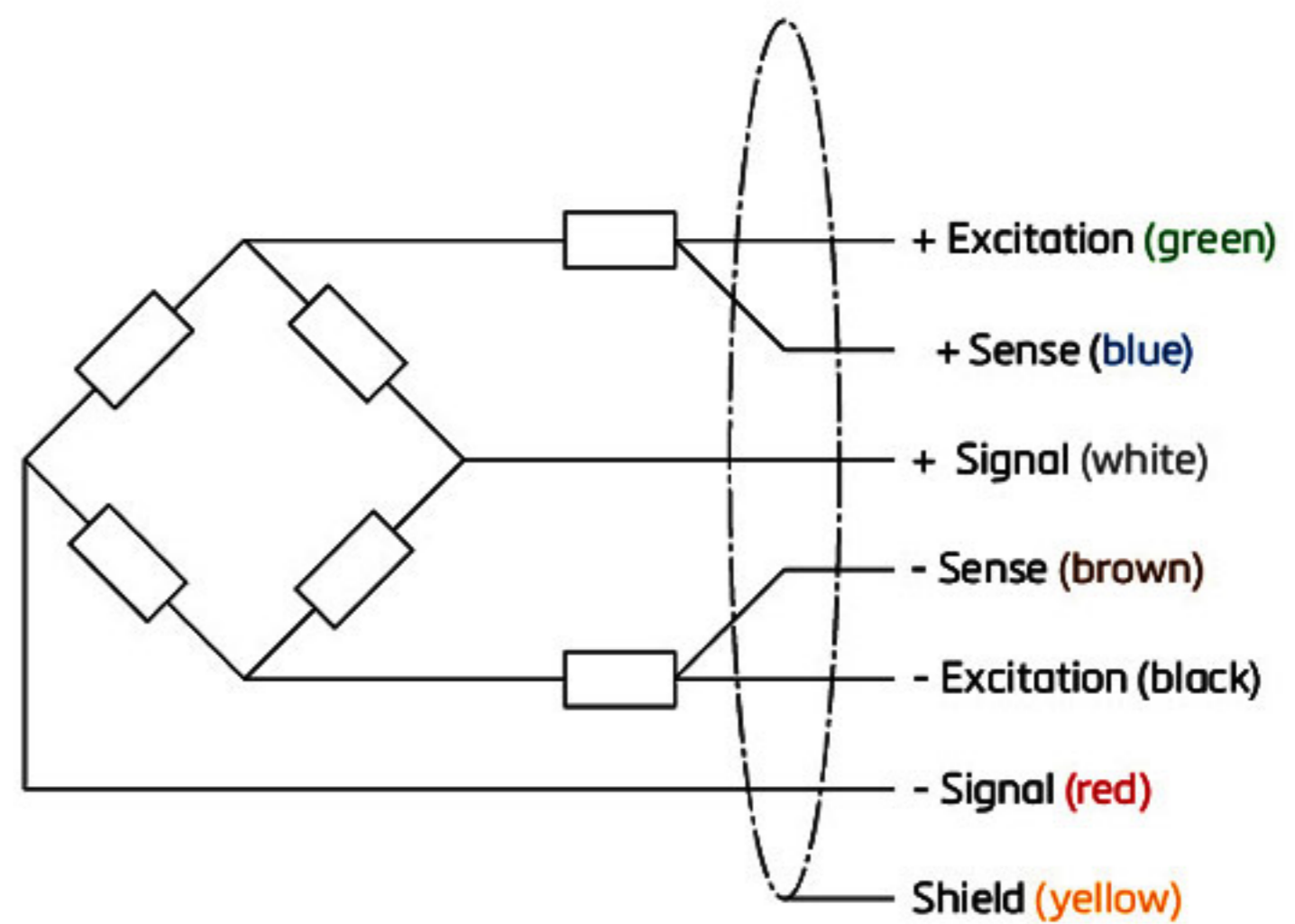
Cable jacket: polyurethane

Cable length: 3 m

Cable diameter: 5 mm

The shield is floating

On request the shield can be connected to the load cell body



- ▶ 동적 계량 어플리케이션에 최적화된 로드셀
- ▶ 고속 중량 성별기와 같은 동적 계량에서 높은 정확도의 계량 결과를 제공
- ▶ 견고하고 내구성 있는 설계로 높은 계량 정확도를 제공

Maximum capacity (E_{max})	kg	20	
Accuracy class according to OIML R60		(GP)	G3*
Maximum number of verification intervals (n_{LC})		n.a.	3,000
Minimum load cell verification interval (v_{min})		n.a.	$E_{max} / 20,000$
Temperature effect on minimum dead load output (TC_0)	%*RO/10°C	± 0.0400	± 0.0070
Temperature effect on sensitivity (TC_{RO})	%*RO/10°C	± 0.0200	± 0.0100
Combined error	%*RO	± 0.0500	± 0.0200
Non-linearity	%*RO	± 0.0400	± 0.0166
Hysteresis	%*RO	± 0.0400	± 0.0166
Creep error (30 minutes) / DR	%*RO	± 0.0600	± 0.0166
Rated Output (RO)	mV/V	2 ± 5%	
Zero balance	%*RO	± 5	
Excitation voltage	V	5...15	
Input resistance (R_{LC})	Ω	1,100 ± 50	
Output resistance (R_{out})	Ω	960 ± 50	
Insulation resistance (100 V DC)	MΩ	≥ 5,000	
Safe load limit (E_{lim})	%* E_{max}	200	
Ultimate load	%* E_{max}	300	
Safe side load	%* E_{max}	100	
Maximum platform size; loading acc. to OIML R76	mm	600 x 600	
Maximum off centre distance at maximum capacity	mm	200	
Compensated temperature range	°C	-10...+40	
Operating temperature range	°C	-40...+80 (ATEX -40...+60)	
Load cell material		stainless steel 17-4 PH (1.4548)	
Sealing		complete hermetic sealing; cable entry sealed by glass to metal header	
Protection according EN 60 529		IP68 (up to 2 m water depth) / IP69K	
Packet weight	kg	1.6	

- › **Stainless Steel 구조 / 완전 용접 구조 밀봉**
- › **동적 계량 / 높은 정확도**
- › **플랫폼 규격 600 X 600mm**
- › **로드셀 케이블 : 폴리 우레탄 3m x 5mm**
- › **EN 60 529에 따른 보호 : IP 68(up to 2m) / 69K**

모 델	용 량 (kg)	집판규격 (mm)	등 급	재 질
PC 22	5,20,30,40	350 × 350	C3	Aluminum
PC 42	5,10,20,30,50,100,200	400 × 400	C3	Aluminum
PC 46	50,100,150,200,250	400 × 400	C4	Aluminum
PC 1	7.5,10,15,30,50,75,100,200	600 × 600	C4	Stainless Steel
PC 6	10,20,50,100,200	600 × 600	C4	Stainless Steel
PC 7	100,250,500	600 × 600	C4	Stainless Steel
PC 60	30,50,100,150,200,300,500,750	600 × 600	C3	Aluminum
PC 12	20	600 × 600	C3	Stainless Steel
PC 2	20	600 × 600	G3*	Stainless Steel
	150	1000 × 1000	G3*	Stainless Steel
PCB	50/100/250/500/1000	1000 × 1000	C3M16	Stainless Steel
PC 2H	2000	1200 × 1200	C3	Stainless Steel