

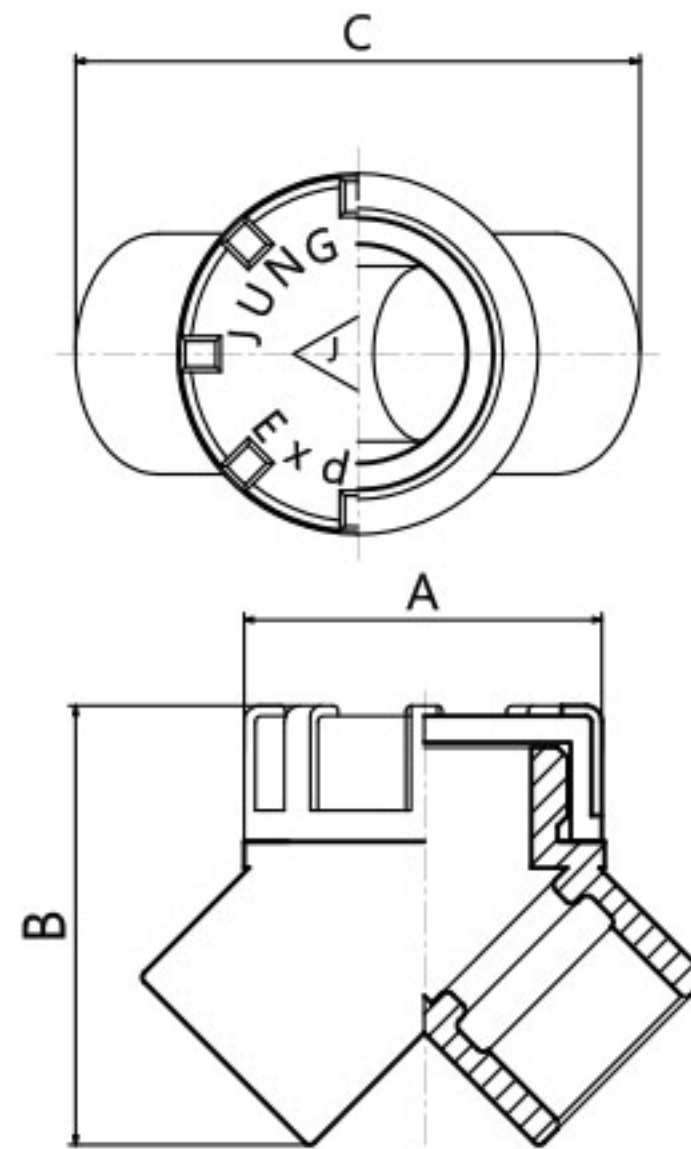
**내압방폭형 엘보 & 티**

Class, Division 1, Ex d IIC



DB Types

Catalogue	Conduit Size	Dimensions(mm)			Weight(kg)
		A	B	C	
DB 16	16 (1/2")	70	77	90	0.86
DB 22	22 (3/4")	70	80	98	0.9
DB 28	28 (1")	70	86	108	1.06
DB 36	36 (1 1/4")	88	100	126	1.8
DB 42	42 (1 1/2")	88	106	136	1.9
DB 54	54 (2")	104	115	158	2.76



DL Types

Catalogue	Conduit Size	Dimensions(mm)			Weight(kg)
		A	B	C	
DL 16	16 (1/2")	70	67	91	0.9
DL 22	22 (3/4")	70	70	91	0.96
DL 28	28 (1")	70	79	97	1.16
DL 36	36 (1 1/4")	87	90	111	1.8
DL 42	42 (1 1/2")	87	96	111	1.86
DL 54	54 (2")	105	112	130	2.86

