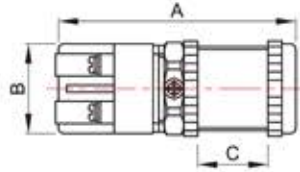
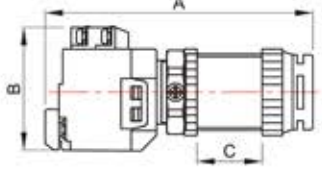




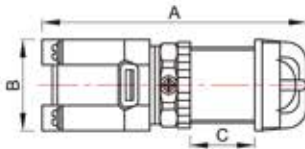
Push Button Switch



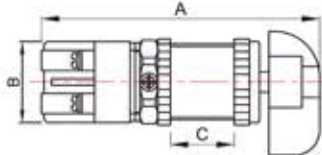
Illuminated Push Button Switch



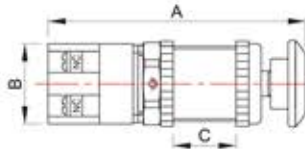
Pilot Lamp



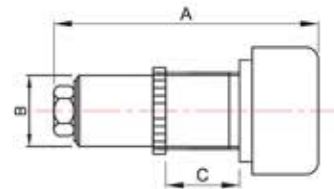
Selector Switch



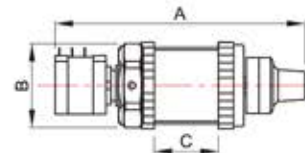
Emergency Switch



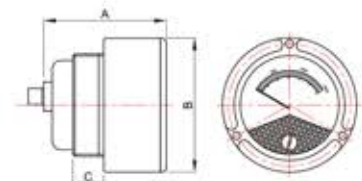
Buzzer



Volume Switch



Ampere Volt RPM Meter



주요사양 Specifications

품명	모델	형태	규격 A × B × C mm			최대 전압	컬러	방폭 등급
Push Button Switch	FPB	S	86.2	32	25.2	AC250V 6A 1a 1b / 2a 2b	R, G, Y, B, W, B	EX d IIC
Illuminated Push Button Switch	FPBL	S	105.7	48.4	25.8	AC110, 220V 6A DC24V 6A	R, G, Y	EX d IB+H2
Pilot Lamp	FPL	S	104.5	36	25.6	AC110, 220, 380 480V DC24V	R, G, Y, W	EX d IIC
Selector Switch	FSS	S	110	32	25.2	AC 250V 6A 2,3 Position		EX d IIC
Emergency Switch	FEM	S	100	32	25.2	AC 250V 6A		EX d IIC
Buzzer	FBZ		104	28	29	AC110, 220V / DC24V		EX d IIC
Volume Switch	FVL	S	97	33	25.2	1Turn 1~10kΩ 10Turn 1~10kΩ		EX d IIC
Ampere Volt RPM Meter			71.5	78	18	400A 600V 20mA / 1,800RPM		EX d IB+H2